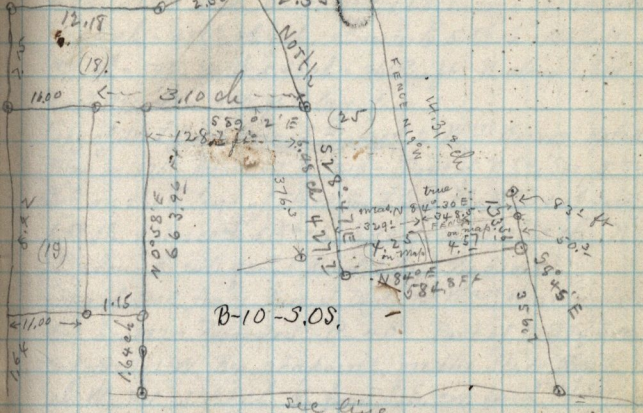


Mark to be conveyed for road 100-100 ft.



B-10-S.O.S.

SEE Page 314

- ✓ Copy of deed from James Burch & wife to George Walker dated - May 30-1870 - Recorded E-186-
- ⊕ Part of N.E. 1/4 Sec 5 Sp 5-N-R-1-W, Beg. 1.18 ch S. from N.E. cor. said 1/4 Sec, N. 10.90 ch to St. South 3.60 ch, E 10.40 ch, N. to beg. 3.9/10 a
- ✓ Copy - deed from James Burch & wife to Geo. R. Hill dated May 30-1870 - Recorded H-152 - Part of N.E. 1/4 Sec 5 Sp-5-N-R-1-W, Beg. 4.78 ch, S. from N.E. cor. said 1/4 Sec, N. 5.35 ch, S 3.60 ch, E. 5.35 ch N. 3.60 ch to beg. 1.92 a.